



----- CWEA Specialty Conference on Contaminates of Emerging Concern -----
----- Congrats to the LA Wrecking Crew and Good Luck at WEFTEC -----
----- CWEA Specialty Conference on Energy Efficiency in Treatment Plants -----
----- LABS President Receives Special Award -----
----- See Page 7 for LABS July Dinner Flyer -----

July 2007: SEWER LEAKS – A Los Angeles Basin Section of the CWEA Publication

JULY DINNER MEETING

**CITY OF L.A. COLLECTION SYSTEM MANAGEMENT: THURSDAY JULY 26
SAMBI TOKYO RESTAURANT, DOWNEY.**

SEE PAGE 7

AUGUST ANNUAL PAST PRESIDENTS EVENT

**LABS NIGHT AT DODGER STADIUM: SATURDAY AUGUST 18,
7:10M DODGERS VS. COLORADO ROCKIES**

\$15 TICKETS FOR INFIELD RESERVE SEATS (NORMALLY \$25)

SEE PAGE 6

JUNE LABS DINNER MEETING REVIEW (PAGE 2). Fine satellite imagery to help monitor and control ocean pollution. Below is a European Remote Sensing 1 satellite radar image depicting natural oil seeps in the Santa Barbara Channel off Coal Point, California, Jan. 13, 1996. Image credit: ESA



On June 21, 2007 the Los Angeles Basin Section (LABS) of CWEA hosted a training meeting at Taix Restaurant in Los Angeles. Ben Holt, a Research Scientist in the Oceanography-Atmosphere Group at JPL Pasadena discussed pollution issues for the Southern California Bight (SCB). These include: stormwater runoff plumes, municipal wastewater plumes, and natural hydrocarbon seeps. Due to their small size and episodic nature, these pollution hazards are difficult to sample adequately using traditional in situ oceanographic methods. Complex coastal circulation and persistent cloud cover can further complicate detection and monitoring.

At the JPL, Mr. Holt and his team use fine-resolution imagery from satellites, complemented by field measurements, to examine these hazards in the SCB. Examples of these pollution hazards from Santa Monica Bay and San Pedro Bay were shown. Of particular interest were recent observations from the November 2006 Hyperion 1-mile outfall diversion event.

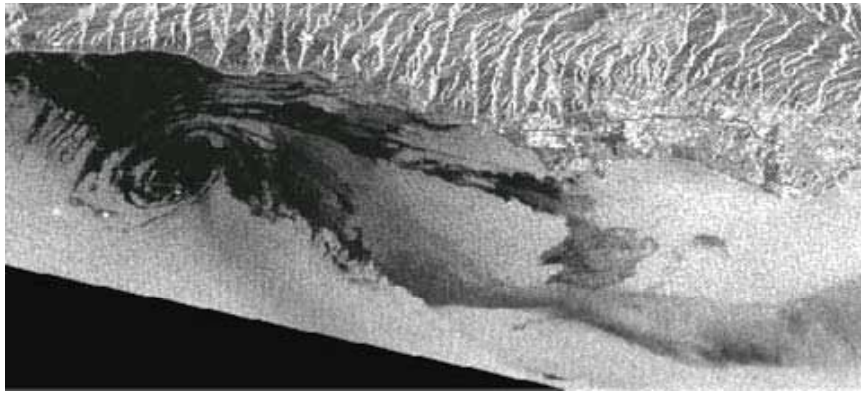


Ben Holt Research Scientist at JPL

Mr. Holt explained that this NASA-funded study of marine pollution in Southern California concluded space-based synthetic aperture radar can be a vital observational tool for assessing and monitoring ocean hazards in urbanized coastal regions. Using Southern California as a model system, the research team has shown that existing high-resolution space-based radar systems can be used to detect and assess marine pollution hazards. This is a means for water quality managers to better protect public health and coastal resources.

Mr. Holt and colleagues from JPL; the University of California, Santa Barbara; and the University of Southern California, Los Angeles, examined satellite radar imagery of the coastal waters of Southern California. The area is adjacent to 20 million people, nearly 25 percent of the U.S. coastal population. The imaging radar data from the European Space Agency's European Remote Sensing Satellites 1 and 2 and Canada's Radarsat were complemented by shore-based surface current radar data and other field measurements.

Space-based imaging radar detects pollution deposits on the sea surface consistently irrespective of light or weather conditions, and when combined with field surveys and other observations including shore-based radar data, it improves resolution. The presentation described three major pollutant sources for Southern California: storm water runoff, wastewater discharge and natural hydrocarbon seepage. "During late fall to early spring, storms contribute more than 95 percent of the region's annual runoff volume and pollutant load," said Ben Holt. "Californians are accustomed to warnings to stay out of the ocean during and after storms. Even small storms can impact water quality. Radar data can be especially useful for monitoring this episodic seasonal runoff," he said.



European Remote Sensing 1 satellite radar image of stormwater runoff plumes from Los Angeles and San Gabriel Rivers into the Los Angeles and Long Beach Harbors. Dec. 28, 1992. Image credit: ESA

The regional Southern California marine water quality monitoring survey includes JPL and more than 60 other organizations, including the Southern California Coastal Water Research Project. Its goal is to characterize the distribution and ecological effects of storm water runoff in the region. Space radar and other satellite sensor data are being combined, including NASA's Moderate Resolution Imaging Spectroradiometers. The sensors provide frequent observations, subject to clouds, of ocean color that can be used to detect regional storm water runoff and complement the finer resolution but less frequent radar imagery.

The second largest source of the area's pollution is wastewater discharge. Publicly owned treatment works discharge daily more than one billion gallons of treated wastewater into Southern California's coastal waters. Even though it is discharged deep offshore, submerged plumes occasionally reach the surface and can contaminate local shorelines. Natural hydrocarbon seeps are another local pollution hazard. Underwater seeps in the Santa Barbara Channel and Santa Monica Bay have deposited tar over area beaches. Space imaging radar can track seepage on the ocean surface, as well as human-caused oil spills, which are often affected by ocean circulation patterns that make other tracking techniques difficult.

Further research is necessary to determine the composition of pollution hazards detected by radar. "From imaging radar, we know where the runoff is, but not necessarily which parts of it are harmful," Holt said. "If connections can be established, imaging radar may be able to help predict the most harmful parts of the runoff."

WEF Webcast Workshops offer Cost Effective Training Opportunities

On June 12, 2007 wastewater professionals gathered in Whittier for a WEF webcast *Large MBR Design and Residuals Handling*. Speakers George Crawford, Mike Hribljan, Mark E. Lang, Paul J. Schuler, discussed Large MBR Design. For more professional development opportunities go to <http://www.wef.org/ConferencesTraining/TrainingProfessionalDevelopment/Webcasts>



Earn CWEA Contact Hours at LABS Dinner and Training Meetings!

You can earn Contact Hours for attending local section training meetings. Just fill out the attendance form and have it signed-off each time by an authorized local section representative. Attendance at 2 dinner meetings will earn 1 Contact Hour.

Specialty Conference: Chemicals of Emerging Concern a Success

On Tuesday, May 22, 2007, the DC Tillman Water Reclamation Plant (DCT) and LABS hosted a Conference on Chemicals of Emerging Concern from a Regulatory and Analytical Perspective. Emerging contaminants are new compounds found in water/wastewater that originate from pharmaceuticals, personal care products, and other new products in the home or business. These compounds are studied to see if they are “endocrine disruptors”, which impact aquatic life.



The successful conference served as a discussion forum for over 60 attendees. Leading researchers: Susan Glassmeyer, a Chemist from USEPA's office of Research and Development; Brett Vanderford, a Chemist with the Southern Nevada Water Authority; and Michael Rosen, a Hydrologist with the USGS; presented strategies to address these concerns. Special thanks to Barbara Santos, of Simi Valley, Roger Ramsay and Rama Korand of DCT, and Betty Ethridge of the Japanese Garden. John Mays of DCT moderated the event.

Congrats to the LA Wrecking Crew and Good Luck at WEFTEC!

Skilled teams competed in the annual CWEA 2007 state operations challenge in Ontario. The competition tests several areas of hands-on expertise including: laboratory techniques, process control, pump maintenance, collections, and safety. Achievement in this event is known throughout the industry to represent "excellence in wastewater operations".

Those who were not able to attend will get another chance to see the division winners as they go on to represent California at the national level during the 2007 Water Environment Federation Conference (WEFTEC) October 15-17 in San Diego. Congratulations to this year's 1st Place 1st Division winners, the LA Wrecking Crew. Good luck at WEFTEC 2007!



CWEA Specialty Seminar on Energy Management a Success

On June 5, 2007 the California Water Environment Association (CWEA) sponsored a one-day Specialty Seminar on Energy Efficiency in Treatment Plants in Whittier. The Specialty was also presented in Elk Grove on June 12, 2007. The workshop was designed as a discussion forum for plant operators, POTW engineering and management, and consultants. Keene Matsuda and David Kubel, of Black & Veatch, opened the seminar with a presentation on automation and energy optimization. Dave Reardon and Paul Cockrell, of HDR, continued with discussions of the impacts of overdesign on energy consumption and strategies for the use of sidestreams such as fats oils and grease (FOG) to enhance anaerobic digester gas production.



Dr. Vince McDonnell of the UC Irvine Advanced Power and Energy Program presented available energy management resources. Craig Florer, of Chevron Energy Solutions expanded on the use of energy savings as a cost effective offset for new infrastructure. Mark Revilla, of LACSD concluded with an exploration a demand side management program, that included case studies, which addressed some of the challenges to implementation of a new program.

The Application Deadline for October 2007 Engineering Registration Examinations is July 20, 2007



Applications for the October 2007 Professional Registration Examinations in Civil, Electrical, and Mechanical Engineering, must be filed by July 20, 2007 visit dca.ca.gov/pels for more information. Preparatory courses offered through the UCLA extension include Civil Engineering Review, Civil Engineering Special Seismic Review, Civil Engineering Special Surveying Review, Electrical Engineering Review, and Mechanical Engineering Review for more information about the review courses visit uclaextension.edu/engineeringtechnicalmanagement or call (310) 206-1548 or email ceisman@uclaextension.edu. Review courses start July 10, 2007.

LABS President Receives Special Recognition

Pei-Chin Low our 2007-2008 Labs President was awarded CWEA's President's Special Recognition Award at the Annual Conference in Ontario, CA. This award is in recognition of exceptional personal accomplishments and outstanding contributions to CWEA.



WEF Leadership Training at the University of North Carolina–Chapel Hill

Leadership is of interest to water and wastewater management. To establish resources that support this important topic, the National Association of Clean Water Agencies (NACWA), the Association of Metropolitan Water Agencies (AMWA), the American Water Works Association (AWWA) and the Water Environment Federation (WEF) developed a joint-venture *Water and Wastewater Leadership Center* for utility leaders.

Established in 2000, the goal of the leadership center is to prepare leaders and management executives for water and wastewater utilities throughout the United States, so these organizations can meet customers' current and future demands for the highest level of service, quality and efficiency. Classes are held in state-of-the-art facilities at the Paul J. Rizzo Conference Center's Executive Education program at the Kenan-Flagler Business School, University of North Carolina–Chapel Hill.



The course consists of a 12-day residential leadership development program, unlimited peer-networking, an online resource center, and optional faculty mentoring.

The deadline for application is December 15, 2007. See the Application Information for additional information visit <http://www.nacwa.org/meetings/leader/>.

Electronic Sewer Leaks Version Available

Receive your LABS Sewer Leaks earlier than by mail with the option of receiving an electronic edition. Please contact dgary@lacs.org if you wish to receive an e-mail edition of Sewer Leaks. Stay current on the latest LABS, CWEA, and WEF activities at www.labsofcwea.com

It's Time for Dodger Baseball Game Tickets

LABS is having the August Past President's event at Dodger stadium this year. There are 50 tickets in Section 8 of the reserve level (just above the right side of the press box level) at \$25 each for Saturday, August 18, 2007 at 7:10 PM. The Dodgers will be playing the Colorado Rockies. Please mail a check only (no cash or credit) for 1 to 4 tickets to John Mays, DCT WR Plant, 6100 Woodley Ave, Van Nuys, CA 91406 (John.Mays@lacity.org 818-767-4138).





**City of LA's Collection System
Management Efforts
Win-Win Partnerships Lead to Great
Results.**



Thursday, July 26, 2007

Sambi of Tokyo Restaurant

----- 8649 Firestone Blvd. in Downey (see map below) -----

--Guest Speaker--

**Adel H Hagekhalil- Division Manager: Wastewater Engineering Services Division
Bureau of Sanitation – City of Los Angeles**

Mr. Hagekhalil will highlight the City's successful collection system management efforts. A strong commitment to protecting the public health and environment, and win-win partnerships guaranteed the great results achieved by the City. These partnerships include the various City offices, regulators, environmental organizations and community groups.

Three years after reaching a landmark settlement agreement with the USEPA, the LA-RWQCB and the Santa Monica Baykeeper that ended a lengthy litigation regarding sewer overflows, the City has achieved excellent results with over 70 percent reduction in sewer overflows through a comprehensive sewer cleaning, upgrade and repair program. Mr. Hagekhalil will highlight the various elements of the agreement and the City's program. The elements of the City's program are proven and accepted by the regulators and are very similar to the Sewer System Management Plan (SSMP) now required by the State WDR. Mr. Hagekhalil will give specific results on performance levels discuss the various partnerships that were built to help achieve the program elements and results.

**6:00 PM Cocktails & Networking
7:00 PM Dinner 8:00 PM Presentation**

Dinner will be buffet style with Japanese-American Cuisine

RSVP By MONDAY, July 23rd

RSVP to Patrick Griffith by e-mail

pgriffith@lacsdc.org

-or-

phone 562-908-4288, x-2117

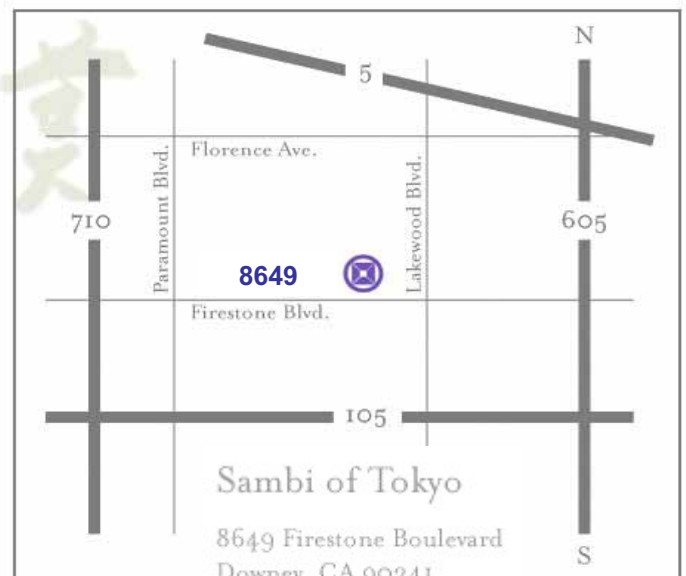
Event Cost (Note Special Event Lower Rates!!):

(pay at the door)

Member	\$25
Non-Member	\$30
Student / Retiree	\$15



Handicap Accommodations Available



Sambi of Tokyo

8649 Firestone Boulevard
Downey, CA 90241

562.869.1171 (main)



LABS CORPORATE SPONSORS



John H. Wilson, Jr.
18377 Stanislaus Street
Fountain Valley, CA 92708

ph: 714-593-0325
Fax: 205-307-3886



Donald G. Rosenberg and Associates, Inc.
6442 Coldwater Caynon, Suite 101
North Hollywood, CA 91606
ph: 818-508-4523
fax: 818-508-6126
Donald G. Rosenberg, Principal



BioCOPE, Inc.
Pat McDaniel, President
23711 Hix Drive
Canyon, TX 79015
ph: 800-900-6201
Fax: 888-473-4948
www.biocope.com
pmcdaniel@biocope.com



Amir Soltanieh
3010 Floyd St.
Burbank, CA 91504-2599
ph: 818-562-5282
fax: 818-842-3217

Orange County Office
ph: (949) 855-0919
fax: (949) 855-0929
www.flo-systems.net



James H. Clark, P.E.
Vice President
800 Wilshire Blvd. # 600
Los Angeles, CA 90017
ph: 213-312-3300
Fax: 213-312-3399
www.bv.com
clarkjh@bv.com



Solving your pump problems since 1987

Kelly King
1241 N. Lakeview Ave. Suite T
Anaheim, CA 92807
Ph: (714) 779-0911
Fax: (714) 693-1715
www.cortechpumps.com



Dan Zinman
ph: 805-402-3233
www.californiawatertechnologies.com

Ferric/Ferrous Chloride
Drinking Water
Wastewater
Produced in Southern California



Dhiru Patel, P.E., Vice President
1199 S. Fullerton Rd.
City of Industry, CA 91748-1232

*Engineering
Excellence in Water &
Envirostructure*

ph: 626-912-3391, x-209
fax: 626-912-2015
dhiru-p@lee-ro.com
www.lee-ro.com



Judi Miller, P.E., Project Manager
1000 Wilshire Blvd., 21st floor
Los Angeles, CA 90071
Judi.Miller@CH2M.com

ph: 213-538-1388 x-8236
direct: 213-228-8236
mobile: 949-293-3468
fax: 714-424-2153



Kris Brooks
155 Balboa St.
Suite D-9
San Marcos, CA 92069

ph: 760-510-8030
fax: 760-510-8031
www.marcabcoinc.com



R. Bruce Zimmerman, Vice President
5411 Avenida Encinas, Suite 250
Carlsbad, CA 92008

ph: 760-931-0555
fax: 760-931-9115
bruce@coombshopkins.com



Murrill Adams
1200 N. Jefferson, Unit M
Anaheim, CA 92807
ph: 714-630-3861
fax: 714-630-4807
Toll Free: 866-462-3577
www.goldenbellproducts.com



LABS CORPORATE SPONSORS



Geoffrey A. Carthew, P.E., V.P. Dir. of Wastewater Services
 MWH Americas, Inc.
 301 North Lake Ave., Suite 600
 Pasadena, CA 91101
 geoffrey.a.carthew@mwhglobal.com

ph: 626-796-9141
 Direct: 626-568-6290
 fax: 626-568-6101



Pacific Process Equipment, Inc.

Lou Giordano
 209 E. Alameda St.
 Suite 204
 Burbank, CA 91502-2674
 ph: 818-500-9495
 fax: 818-500-9799
 www.pacificprocess.com



Rick Di Cesare
 1111 Rancho Conejo blvd., Suite 501
 Newbury Park, CA 91320
 ph: 805-498-3811
 ph: 805-498-2601
 fax: 805-498-7631
 rick@mrctechnologies.com



Bay Area Process PUMPS
 14365 Meadow Dr.
 Grass Valley, CA 95945
Marc Cuniberti, Engineer
 Ph: (530) 272-2298
 Fax: (530) 272-2753
 Pager: (530) 270-2086
 bayareaprocess@earthlink.net

- Parts
- Systems
- Repairs
- Rentals



Water Resource Measurement and Control
 Temperature/Pressure
 Level/Flow
 ph, ORP, O2
 Conductivity, O3, PID

Dave Snyder
 818-772-8720
 dave@sensorguys.com
 www.sensorguys.com

Interested in Becoming a Corporate Sponsor?

Contact Pat McDaniel at
800-900-6201
pmcdaniel@biocope.com



Surendra Thakral, P.E.
 V.P. S.W. Business
 Development Manager
 100 West Walnut, St.
 Pasadena, CA 91124

ph: 626-440-6263
 cell: 626-483-3171
 fax: 626-440-6337
 surendra.thakral@parsons.com



Steven Stump
 17631 Metzler Lane
 Huntington Beach, CA 92647

ph: 714-847-1317
 fax: 714-847-6907
 Lic. 686371



Chuck Parsons
 5841 Engineer Dr.
 Huntington Bch., CA 92649
 chuck@sancon.com
 www.sancon.com

ph: 714-891-2323
 ph: 800-726-2664
 fax: 714-891-2524
 cell: 714-231-3630
 Contr. Lic. 731797



PUMPS, PARTS & SERVICE

Greg Millard, P.E.
 10207 Buena Vista Ave., Suite AA
 Santee, CA 92071-4476

ph: 619-258-9191
 fax: 619-258-9088
 www.tekdraulics.com
 greg.tekdraulics@sbcglobal.net



Steve Ahles, Proj. Manager, Burbank Water Reclamation Plant
 740 North Lake St.
 Burbank, CA 91502
 steve.ahles@unitedwater.com

ph: 818-972-1115, x-20
 cell: 805-551-8997
 fax: 818-845-0718



Sales Service Training

Lisa Haller
 1042 N. El Camino Real, Suite B-228
 Encinitas, CA 92024
 www.westcoastsafetysupply.com

ph: 760-635-9237
 ph: 800-804-7772
 fax: 760-635-9156
 wcsc@sbcglobal.net

Sewer Leaks Editor

Wendy Wert
1955 Workman Mill Rd.
Whittier, CA 90601

LABS Board of Directors

President:	Pei-Chin Low	(626) 568-6999
Vice President:	Patrick Griffith	(562) 908-4288 x-2117
Treasurer:	Dan Gary	(310) 830-2400 x-5316
Director:	Hala Titus	(213) 312-3330
Director:	Pat McDaniel	(800) 900-6201
Director:	Wendy Wert	(562) 908-4288 x-2128
Past President:	John Mays	(818) 778-4138

Address Changes

Please contact our Membership Chair, Marge Okabe at (310) 375-0448 or send an email to labs-membership@earthlink.net

LABS Committee Chairs

Programs:	Patrick Griffith	(562) 908-4288 x-2117
Newsletter:	Wendy Wert	(562) 908-4288 x-2128
Membership:	Marge Okabe	(310) 375-0448
WW Treatment & Reuse:	Reza Iranpour	(310) 648-5280
Awards:	John Mays	(818) 778-4138
TCP:	Kris Flaig	(213) 473-8553
Supergroup:	Dan Gary	(310) 830-2400 x-5316
Indus. Waste Insp.:	Bill Garrett	(562) 699-7411 x-2907
Collection Systems:	Pat McDaniel	(800)-900-6201
Public Education	Michael Simpson	(323) 342-6047
Operator Certification:	Francisco Ramirez	(310) 648-5857
Webmaster	Alec Mackie	(714) 428-4614

Open Chair: Safety

SPECIAL EVENTS CALENDAR

July 24 th	Engineers without Borders Los Angeles Meeting at DWP http://www.ewb-la.org/meetings.htm
July 26 th	LABS Training Meeting Collection Systems contact pgriffith@lacsdc.org or 562-908-4288 x-2117 tentative date
Aug 2 nd – Sep 27 th	PE Review Course sponsored by ASCE http://www.projectpartners.com/ps/p_s_show_event.asp?id=1848&socid=13
Aug 13 th	Water for People 3 rd Annual Kiwanis Charity Golf Event Ontario, California http://www.waterforpeople.org/local_events.html
Aug 18 th	LABS Dodger Game contact John Mays 818 - 778 - 4138 John.Mays@lacity.org

www.projectpartners.com/ps/index.htm
www.ewb-la.org
<http://www.waterforpeople.org/>
<http://www.wef.org/>
<http://www.cwea.org/>
<http://www.labsforcwea.com/>