



- April 2007 LABS Dinner and Training Meeting -----
- LABS Past Presidents Event -----
- The Central Basin Municipal Water District and LACSD Earth Day Success -----
- CWEA 2007 Annual Conference in Ontario -----
- See Page 7 for the LABS May Dinner Flyer -----

May 2007: SEWER LEAKS – A Los Angeles Basin Section of the C W E A Publication



Donald C. Tillman Water Reclamation Plant

Los Angeles Glendale Water Reclamation Plant (below)



LABS Hosts Dinner and Training Meeting

On April 26, 2007 the Los Angeles Basin Section (LABS) of CWEA held officer installations during a training meeting at Ports O'Call Restaurant in San Pedro. Slavica Hammond of MWH discussed their experiences during design and construction of a major nitrogen removal program at the City's upstream plants.

The Donald C. Tillman (DCT) (located in the Sepulveda Basin in Van Nuys) and Los Angeles-Glendale (LAG) (located in the vicinity Colorado Blvd. and the I-5 Freeway) Water Reclamation Plants are being converted for nitrogen removal using the eMLE (enhanced Modified Ludzack Ettinger) process. The Los Angeles/Glendale Water Reclamation Plant was designed for conventional activated sludge treatment in the late 1960's and built in the mid 1970's.



CWEA President Paula Zeller installed the 2007 LABS officers at Ports O'Call in San Pedro.

Nitrogen limits are a relatively new requirement from the Regional Water Quality Control Board. The purpose is to remove nitrogen from the waters of the Los Angeles River to provide a more healthful environment for aquatic life. Studies show that the effluent from LAG and DCT is a source of the LA River's nitrogen. Certain nitrogen compounds, such as ammonia (NH_3) in elevated concentrations exhibit toxic effects on aquatic life. The Los Angeles River has the ability to assimilate a portion of these compounds. It is anticipated that removing additional nitrogen compounds (i.e., ammonia, nitrates, nitrites) may enhance the water quality and habitat of the LA River.

Costs for the program were \$15 million for LAG and \$87 million for DCT. In addition to the initial investment it is anticipated that O&M costs will increase. For example power costs will increase due to the added energy needed to produce higher dissolved oxygen levels in the aeration tanks. Chemical costs will increase due to the addition of polymer to control foam. Disinfection costs of the Plant's final effluent may increase due to chemical reactions in the absence of ammonia, i.e., no chloramines will be formed.

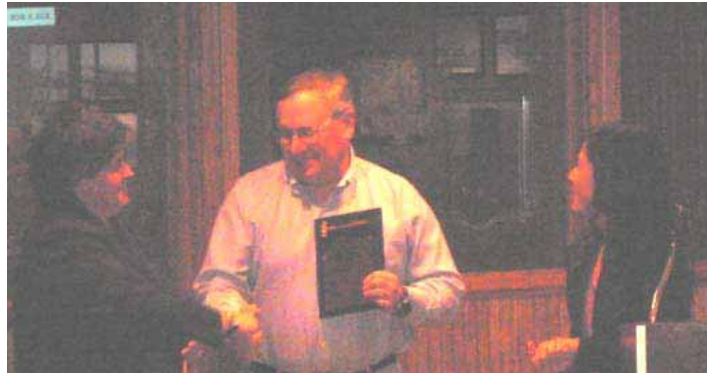


Slavica Hammond of MWH presents results of the City of LA's nitrogen removal program at Ports O'Call in San Pedro.

Process Implications

The main treatment process unit of each plant, Secondary Treatment, were each designed for conventional activated sludge treatment of sewage. Each needs to be converted to a nitrification/denitrification (aerobic and anoxic) set of sections to comply with the nitrogen removal requirements. This will result in a significant modification of the Secondary Treatment processes at the plants. This operational scheme has been shown to increase foaming in the “biological filtering” section of the process. Excessive foaming can cause odors. The addition of chemicals (polymer) has shown promise in reducing foam.

The amount of flow that is treated may have to be reduced to achieve the higher performance standard. This retrofit may result in a decrease in plant capacity to accommodate the higher treatment level. During the upgrade, throughput (flow) at the plants will have to be de-rated by as much as 40% to 50%.



Paula Zellar thanks 2006 LABS President John Mays for his excellent service and welcomes 2007 LABS President Pei-Chin Low

Due to reduced capacity of these upstream plants, a larger volume wastewater required routing to Hyperion Treatment Plant, the downstream sewers had to be adequate to accommodate the increased flow. Therefore, the City worked with the Regional Board to improve downstream sewer capacity prior to the installation of nitrogen removal at the upstream plants.

It's Time for Dodger Baseball Game Tickets

LABS is having the August Past President's event at Dodger stadium this year. There are 50 tickets in Section 8 of the reserve level (just above the right side of the press box level) at \$25 each for Saturday, August 18, 2007 at 7:10 PM. The Dodgers will be playing the Colorado Rockies.

Please mail a check only (no cash or credit) for 1 to 4 tickets to John Mays, DCT WR Plant, 6100 Woodley Ave, Van Nuys, CA 91406 (John.Mays@lacity.org 818-767-4138). There are significant changes to the parking procedures at Dodger stadium this year so please check out the details on the Internet at <http://losangeles.dodgers.mlb.com>. Our name - LABS of the CWEA, will be appearing on the Stadium*s message board during the 2nd or 5th inning.



Central Basin Municipal Water District and LACSD Earth Day Celebration a Success



On Saturday April 14, 2007 the Central Basin Municipal Water District and LACSD hosted an Earth Day Celebration in Whittier. Over 3,000 community members participated in the successful celebration.

Participants enjoyed hands-on activities such as touch tanks, live animals, engaging displays, and free giveaways all designed to provide valuable information about our environment.



LACSD volunteer Susan helping participants plant CA wildflowers in compost at the “Plant a Seed” booth

The kids zone activities included arts and crafts, puppet shows, and face painting. A highlight of the day was the interactive train ride. Where participants were encouraged to “hop aboard” and learn how a train will be used in the future to haul our trash away. In the garden area members of the community decorated terracotta pots, planted seeds, and attended workshops on native plants and composting.

The City of Pasadena Greening the Earth Day & Armory Family Arts Festival

The City of Pasadena Greening the Earth Day & Armory Family Arts Festival held on Saturday April 21, 2007 was a huge success. More than three thousand participants enjoyed performances, art workshops, and exhibitions.

LACSD volunteer Alice Kuo Celebrates with Students in Pasadena



LABS Welcomes A Webmaster

LABS welcomes Alec Mackie as the 2007 Webmaster. Alec is the Marketing Manager for JWC Environmental in their Costa Mesa office.

Alec’s team designs datasheets, websites, ads, trade shows and research for the Monster family of products. When asked to describe the main purpose of JWC Alec explained, “We remove trash from wastewater.” With over 20,000 installations worldwide, the company is known for their Muffin Monster sewage grinder.

Alec’s first job in the wastewater industry was hauling Seattle’s biosolids during high school summer breaks. Stay current on the latest LABS, CWEA, and WEF activities at www.labsofcwea.com



LABS website (above) Alec wearing the popular Muffin Monster Camouflage hat (below)



CWEA’s Annual Conference in Ontario “Cycle Into Excellence” a Success

From the opening session on Wednesday April 18, 2007 with an Operations & Maintenance focus *Where the Rubber Meets the Road* to the look ahead Engineering & Research special session *The Future of Wastewater Treatment* on Friday afternoon the 79th CWEA Annual conference was a huge success. The technical program presented cutting edge advances in our industry. The exhibitors showed their latest and greatest equipment. The conference had something for everyone. There were “hands on” technical tours and the exciting operations challenge. As Paula Zeller, CWEA President, aptly expressed many opportunities for water professionals to “broaden their horizons.” To much to attempt to cover in our local publication, so instead we offer a few photos of some of the highlights.



Kimberly Eades, Maura Bonnarens and Joanne Azevdo discuss the 80th CWEA Annual Conference “Stepping Up to the Challenge” on April 17, 2007.



Industry leaders Dr. Gatze Lettinga 2007 Tyler Prize for Environmental Achievement winner, Dr. Glen Daigger, Dr. Tim Haug, Dr. Perry McCarty 2007 Stockholm winner (above) discuss upflow anaerobic sludge blanket (USAB) reactors (above) Dr. George Tchobanoglous and Dr. Rhodes Trussell answer questions (below)



Jeff Skinner, Ted Smith, Sue Hasselwander, Colleen Henry, Randy Griel, Steve Laren, Divina Douglas, Chris Rinton (above lt) Mayor Paul S. Leon (above ctr) 2007 Jr. Stockholm winner Swati Yanamadala (left) Paula Zeller CWEA President (below)



Electronic Sewer Leaks Version Available

Receive your LABS Sewer Leaks earlier than by mail with the option of receiving an electronic edition. Please contact dgary@lacsds.org if you wish to receive an e-mail edition of Sewer Leaks.

A River Runs Through It

The Los Angeles River Revitalization Master Plan Draft Programmatic Environmental Impact Report/Programmatic Environmental Impact Statement (State Clearinghouse No. 2006041050) was released for public review and comment on January 29, 2007. As a portion of the community outreach effort three public workshops and hearings were held in multiple locations (Boyle Heights, Canoga Park, and Los Angeles) in February 2007. The public comment period ended March 27, 2007. A final environmental document is projected within the next quarter.

The Los Angeles River flows approximately 51 miles from its origin in the San Fernando Valley region in the City of Los Angeles, to Long Beach Harbor and the Pacific Ocean. The River runs east/southeastward through Los Angeles and along the cities of Burbank and Glendale in its northern reaches, and then heads southward, flowing through the cities of Vernon, Commerce, Maywood, Bell, Bell Gardens, South Gate, Linwood, Compton, Paramount, Carson, and Long Beach respectively.

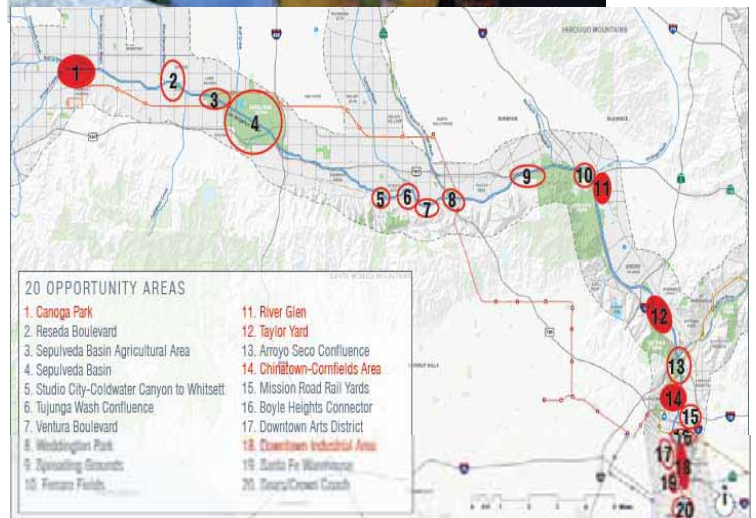


The Los Angeles River is the original source of life for the City of Los Angeles. With extensive building in the growing City came encroachment into the River’s floodplain and the inevitable damage from floods. Flooding occurred often in the first half of the 20th Century; in 1914, 1934, and 1938, devastating floods prompted the U.S. Army Corps of Engineers and the Los Angeles County Flood Control District to construct the concrete-lined channel that now conveys the River for most of its 51 mile length.

In June 2002, the Los Angeles City Council established the Ad Hoc Committee on the Los Angeles River to work with stakeholders on major revitalization efforts. In October 2005 the committee launched a series of public workshops. Community input is key to the development of the Los Angeles River Revitalization Master Plan, a 25-year blueprint that integrates environmental enhancement, green space and economic development that impacts the region.



Councilmember Huizar answers questions at a public workshop, as City Engineer Gary Lee Moore listens. (upper right)
 Out of 20 potential revitalization areas 5 were selected These include (1) Canoga Park (11) River Glen (12) Taylor Yard (14) Chinatown-Cornfields (18) Downtown Industrial Area (lower right)





THE **LOS ANGELES BASIN SECTION** OF THE **CWEA**
HOSTS A DINNER AND TRAINING MEETING



Water For People India Projects

Thursday, May 24, 2007

Monterey Hill Restaurant

----- On West Ramona Blvd in Monterey Park (on top of hill next to golf course - see map below) -----

--Guest Speaker--

Dr. Hélène Baribeau - Volunteer with Water For People

Dr. Baribeau will share with us the results from her country tour of Water For People's India projects, and she will also touch on future plans for expansion for Water For People, a humanitarian non-profit organization committed to helping communities in need of safe drinking water, improved sanitation, and basic hygiene services.

Dr. Baribeau is currently the Team Leader for Water Corps - Rwanda; a program established as part of Water For People's 2007-2011 Strategic Plan, and she chairs Water For People's Orange County Committee. She is one of the recipients of the Kenneth J. Miller award for 2006, given for her outstanding contributions to Water For People. As an Associate with Carollo Engineers, Dr. Baribeau specializes in disinfection processes, disinfection by-products, and water quality in distribution systems and storage facilities.

5:00 p.m. LABS Board of Directors Meeting
 6:00 p.m. Cocktails & Networking

7:00 p.m. Dinner
 8:00 p.m. Presentation

Dinner Menu:

Meals include one of the following entrees:

- **Roasted Prime Rib of Beef**
Served with Au Jus
- **Pacific Swordfish**
Selected Sauce
- **Pasta Primavera**
(for vegetarians)

Reservations:

RSVP By MONDAY, May 21st

RSVP (with one menu choice from above) to Patrick Griffith by e-mail (preferred method) at <mailto:pgriffith@lacsdc.org>

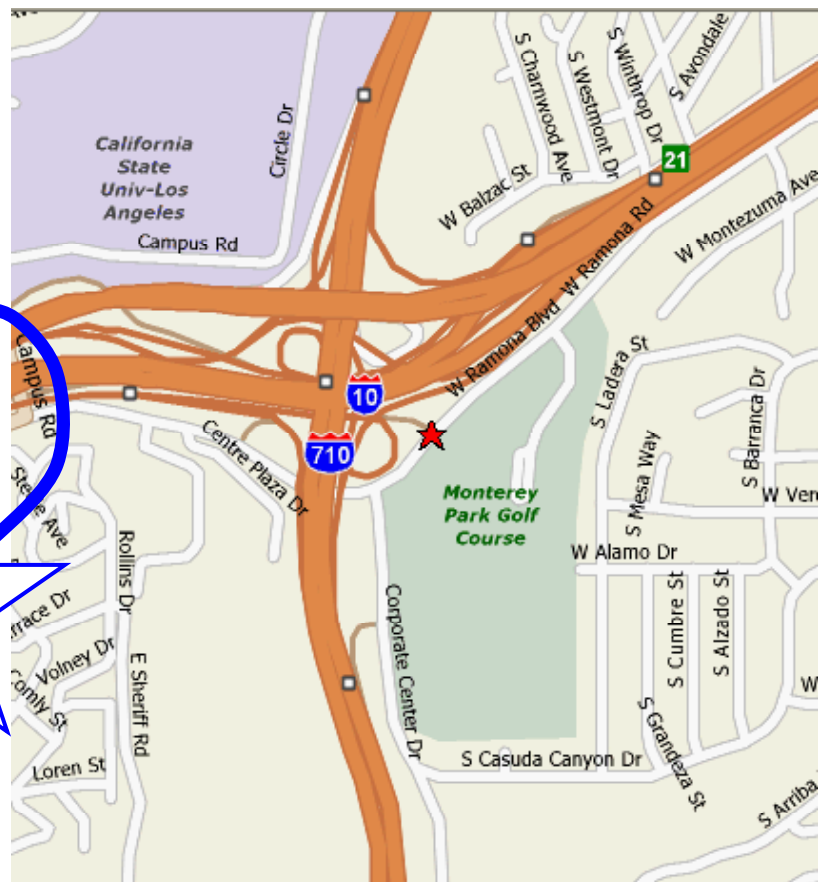
-or-

by phone at 562-908-4288, x-2117

Event Cost: Member \$30
 Non-member \$40

Address & Phone:

Monterey Hill Restaurant
Olympic Room
(On top of the hill, by the Monterey Park Golf Course)
 3700 West Ramona Blvd., Monterey Park, CA 91754
 (323) 264-8426





LABS CORPORATE SPONSORS



John H. Wilson, Jr.
18377 Stanislaus Street
Fountain Valley, CA 92708

ph: 714-593-0325
Fax: 205-307-3886



BioCOPE, Inc.
Pat McDaniel, President
23711 Hix Drive
Canyon, TX 79015
ph: 800-900-6201
Fax: 888-473-4948
www.biocope.com
pmcdaniel@biocope.com



James H. Clark, P.E.
Vice President
800 Wilshire Blvd. # 600
Los Angeles, CA 90017
ph: 213-312-3300
Fax: 213-312-3399
www.bv.com
clarkjh@bv.com



Dan Zinman
ph: 805-402-3233
www.californiawatertechnologies.com

Ferric/Ferrous Chloride
Drinking Water
Wastewater
Produced in Southern California



Judi Miller, P.E., Project Manager
1000 Wilshire Blvd., 21st floor
Los Angeles, CA 90071
Judi.Miller@CH2M.com

ph: 213-538-1388 x-8236
direct: 213-228-8236
mobile: 949-293-3468
fax: 714-424-2153



R. Bruce Zimmerman, Vice President
5411 Avenida Encinas, Suite 250
Carlsbad, CA 92008

ph: 760-931-0555
fax: 760-931-9115
bruce@coombshopkins.com



Donald G. Rosenberg and
Associates, Inc.
6442 Coldwater Canyon, Suite 101
North Hollywood, CA 91606
ph: 818-508-4523
fax: 818-508-6126
Donald G. Rosenberg, Principal



Amir Soltanieh
3010 Floyd St.
Burbank, CA 91504-2599
ph: 818-562-5282
fax: 818-842-3217

Orange County Office
ph: (949) 855-0919
fax: (949) 855-0929
www.flo-systems.net



Solving your pump problems since 1987

Kelly King
1241 N. Lakeview Ave. Suite T
Anaheim, CA 92807
Ph: (714) 779-0911
Fax: (714) 693-1715
www.cortechpumps.com



Dhiru Patel, P.E., Vice President
1199 S. Fullerton Rd.
City of Industry, CA 91748-1232

*Engineering
Excellence in Water &
Envirostructure*

ph: 626-912-3391, x-209
fax: 626-912-2015
dhiru-p@lee-ro.com
www.lee-ro.com



Kris Brooks
155 Balboa St.
Suite D-9
San Marcos, CA 92069

ph: 760-510-8030
fax: 760-510-8031
www.marcabcoinc.com



Murrill Adams
1200 N. Jefferson, Unit M
Anaheim, CA 92807
ph: 714-630-3861
fax: 714-630-4807
Toll Free: 866-462-3577
www.goldenbellproducts.com



LABS CORPORATE SPONSORS



Geoffrey A. Carthew, P.E., V.P. Dir. of Wastewater Services
 MWH Americas, Inc.
 301 North Lake Ave., Suite 600
 Pasadena, CA 91101
 geoffrey.a.carthew@mwhglobal.com

ph: 626-796-9141
 Direct: 626-568-6290
 fax: 626-568-6101



Pacific Process Equipment, Inc.

Lou Giordano
 209 E. Alameda St.
 Suite 204
 Burbank, CA 91502-2674
 ph: 818-500-9495
 fax: 818-500-9799
 www.pacificprocess.com



Rick Di Cesare
 1111 Rancho Conejo blvd., Suite 501
 Newbury Park, CA 91320
 ph: 805-498-3811
 ph: 805-498-2601
 fax: 805-498-7631
 rick@mrctechnologies.com



Bay Area Process PUMPS
 14365 Meadow Dr.
 Grass Valley, CA 95945
Marc Cuniberti, Engineer
 Ph: (530) 272-2298
 Fax: (530) 272-2753
 Pager: (530) 270-2086
 bayareaprocess@earthlink.net

- Parts
- Systems
- Repairs
- Rentals



Water Resource Measurement and Control
 Temperature/Pressure
 Level/Flow
 ph, ORP, O2
 Conductivity, O3, PID

Dave Snyder
 818-772-8720
 dave@sensorguys.com
 www.sensorguys.com

Interested in Becoming a Corporate Sponsor?
Contact Pat McDaniel at
800-900-6201
pmcdaniel@biocope.com

PARSONS

Surendra Thakral, P.E.
 V.P. S.W. Business
 Development Manager
 100 West Walnut, St.
 Pasadena, CA 91124

ph: 626-440-6263
 cell: 626-483-3171
 fax: 626-440-6337
 surendra.thakral@parsons.com



Steven Stump
 17631 Metzler Lane
 Huntington Beach, CA 92647

ph: 714-847-1317
 fax: 714-847-6907
 Lic. 686371



Chuck Parsons
 5841 Engineer Dr.
 Huntington Bch., CA 92649
 chuck@sancon.com
 www.sancon.com

ph: 714-891-2323
 ph: 800-726-2664
 fax: 714-891-2524
 cell: 714-231-3630
 Contr. Lic. 731797



PUMPS, PARTS & SERVICE

Greg Millard, P.E.
 10207 Buena Vista Ave., Suite AA
 Santee, CA 92071-4476

ph: 619-258-9191
 fax: 619-258-9088
 www.tekdraulics.com
 greg.tekdraulics@sbcglobal.net



Steve Ahles, Proj. Manager, Burbank Water Reclamation Plant
 740 North Lake St.
 Burbank, CA 91502
 steve.ahles@unitedwater.com

ph: 818-972-1115, x-20
 cell: 805-551-8997
 fax: 818-845-0718



Sales Service Training

Lisa Haller
 1042 N. El Camino Real, Suite B-228
 Encinitas, CA 92024
 www.westcoastsafetysupply.com

ph: 760-635-9237
 ph: 800-804-7772
 fax: 760-635-9156
 wcsc@sbcglobal.net

Sewer Leaks Editor

Wendy Wert
1955 Workman Mill Rd.
Whittier, CA 90601

LABS Board of Directors

President:	Pei-Chin Low	(626) 568-6999
Vice President:	Patrick Griffith	(562) 908-4288 x-2117
Treasurer:	Dan Gary	(310) 830-2400 x-5316
Director:	Hala Titus	(213) 312-3330
Director:	Pat McDaniel	(800) 900-6201
Director:	Wendy Wert	(562) 908-4288 x-2128
Past President:	John Mays	(818) 778-4138

Address Changes

Please contact our Membership Chair, Marge Okabe at (310) 375-0448 or send an email to labs-membership@earthlink.net

LABS Committee Chairs

Programs:	Pei-Chin Low	(626) 568-6999
Newsletter:	Wendy Wert	(562) 908-4288 x-2128
Membership:	Marge Okabe	(310) 375-0448
WW Treatment & Reuse:	Reza Iranpour	(310) 648-5280
Awards:	Debra Bogdanoff	(562) 908-4288 x-2742
TCP:	Kris Flaig	(213) 473-8553
Supergroup:	Dan Gary	(310) 830-2400 x-5316
Indus. Waste Insp.:	Bill Garrett	(562) 699-7411 x-2907
Collection Systems:	Pat McDaniel	(800)-900-6201
Public Education	Michael Simpson	(323) 342-6047
Operator Certification:	Francisco Ramirez	(310) 648-5857

Open Chair: Safety

SPECIAL EVENTS CALENDAR

May. 22 nd	Engineers without Borders Chapter Meeting at LADWP http://www.ewb-la.org/meetings.htm
May. 24 th	LABS Training Meeting with Helene' Baribeau Water for People Project in India Pei-Chin Low
May 22 & 24	CWEA Specialty Chemicals of Emerging Concern Van Nuys and San Ramon http://www.cwea.org/conferences/2007/Lab_2007.pdf
June 24 th	2007 ITT Water for People Golf Classic Brampton, Ontario, Canada http://www.waterforpeople.org/local_events.html
June 24 th - 27 th	WEF Specialty Conference TMDL 2007 Bellevue, WA http://www.wef.org/

www.projectpartners.com/ps/index.htm
www.ewb-la.org
<http://www.waterforpeople.org/>
<http://www.wef.org/>
<http://www.cwea.org/>